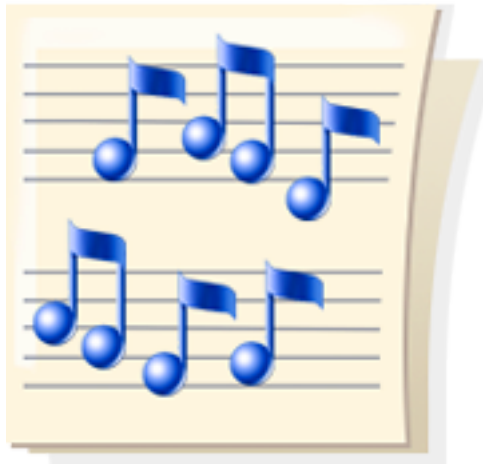


**Sierramont Middle School**

*Band  
Handbook*

**2017-2018**



**Lauren White, Instrumental Music Director**

<http://sierramont.berryessa.k12.ca.us/> > Activities > Band and Orchestra



Thursday, August 14, 2017

Hello, Music Parents!

Welcome to another great year at Sierramont, and thank you for enrolling your student in our music program. In this handbook, you will find answers to commonly asked questions, as well as my grading procedures and expectations.

If you are new to the program, let me tell you a little about myself. I was born and raised near Phoenix, Arizona. I graduated from Northern Arizona University in December of 2006, with my Bachelor's degree in Instrumental Music Education. In 2011, I graduated from the American Band College of Sam Houston State University with my Master's of Music in Instrumental Conducting. My main instrument is euphonium. My musical background is somewhat diverse. I began playing piano at age 6, flute at age 11, and euphonium at age 17. My college training included learning every instrument. 2007-2008 was my first school year at Sierramont, and I am *extremely* honored to be back for another year!

Please read through this handbook thoroughly and sign the agreement by Tuesday, August 22. ***No student will be allowed to play an instrument until all August 22 paperwork is turned in.*** The sooner we have a "balanced instrumentation," and the sooner I get all paperwork, the sooner classes can begin playing!

E-mail is a great way for me to send updates and to keep in touch with parents, so please make sure I get your email address. I also use Infinite Campus for grading all assignments and performances, so please sign up for an account.

Feel free to contact me at anytime! I enjoy hearing comments and suggestions throughout the year. I am most easily reached by email: [lwhite@busd.net](mailto:lwhite@busd.net) , or you may call me at 408-923-1800 x4833.

Thank you so much, and I am looking forward to another excellent year!

Sincerely,

Lauren White

## CLASS DESCRIPTIONS

### CADET BAND

Instrument Choices: flute, oboe, bassoon, clarinet, bass clarinet, all saxophones, trumpet, horn, trombone, euphonium, and tuba (pictured in order below)

Financial Responsibilities:

“Standard of Excellence Book 1” from your local music store: \$6.95

Purchase of a Sierramont Music Polo Shirt, \$18.00, and Music T-Shirt, \$12.00

Donation to the Berryessa Music Boosters, Inc.: \$120.00 per year

Renting an instrument from your local music store: \$25 - \$50 per month

Cadet band is a great class for students who have an interest in playing a musical instrument. It is generally “sixth grade band,” but all students are welcome to join. If you have never played before, that’s ok! Cadet band starts all first to third year players. However, if you already know how to read music or were in band in elementary school, that will be very helpful.



### INTERMEDIATE BAND

Placement is by audition only. Instrument choices and financial requirements are mainly the same as cadet band, with the following changes:

- All students must purchase “Standard of Excellence Book 2”
- Students may play a percussion instrument, by audition only
- Percussion students: purchasing snare sticks, \$7.00, two books, \$13.90, and practice pad, \$16.00

Intermediate band students must have at least 1 year of experience playing their band instrument.

### ADVANCED BAND

Instrument choices and financial requirements remain the same as intermediate band (SEE ABOVE) with the following changes:

- All students must purchase “Standard of Excellence Book 3”
- All students must purchase or borrow an electronic tuner/metronome (Korg TM-50 recommended, approx. \$30.00)
- All students must have a SmartMusic computer account, either at home (\$40) or at school.

Advanced band offers mature, accomplished players the chance to prepare and perform challenging literature. Students are required to participate in several performances during the school year. Many enrichment activities are offered, including possible festivals, field trips, and competitions. Advanced band has the opportunity to travel to Disneyland in the spring to perform in the Disney Magic Music Days. This is not a required performance, but is highly recommended because of the valuable lessons students learn, such as responsibility, teamwork, and performance skills. Students and their families are responsible for paying Disneyland fees (usually about \$480.00) but remember there are many fundraising opportunities available. Some past students have paid their entire Disneyland fees through fundraising! Students must have a grade of A in band to attend the trip. There are extra credit opportunities available.

### CLASS PLACEMENT

Every child has “musical talent” and can be a success in the Sierramont music program. A parent’s expectation should be that any student willing to put forth substantial effort and maintain a good attitude can be successful in music at Sierramont.

Student placement, particularly for returning students, depends on the maturity of the individual, as well as their performance abilities. Discrepancies in performance skills can be lessened through cooperative learning and tutoring, a willingness to work for the good of the group, and by being supportive of classmates’ efforts. These attributes are essential for any student wishing to be in our advanced performing groups. These same attributes are valued in the workplace and are important lifelong qualities. Participation in a musical ensemble is a unique learning experience for every student.

## **BERRYESSA MUSIC BOOSTERS**

Berryessa Music Boosters, Inc., is a fundraising community group that decided to continue to provide elementary school instrumental music instruction when Berryessa Union School District discontinued the funding in 1992. Our middle school instrumental music programs couldn't function without a "feeder" program in the elementary schools. This organization funds elementary instrumental music, and provides instruments and music resources for all schools in the Berryessa Union School District. The Berryessa Music Boosters are always looking for volunteers! If you are interested in helping, please speak with your music teacher.

## **CMEA**

Every year, the *Advanced* classes participate in the CMEA festival, which stands for California Music Educator's Association. This is a competitive performance that includes groups from all around the state of California. CMEA is like state testing for music. It is our chance to show the state what we've accomplished in the music department. It's the most important performance of the year. CMEA takes place in the spring on a Friday or Saturday. The date will be announced in the fall. No absences are allowed. The performance is worth 50 points and no make-up work will be given. Attendance is absolutely mandatory.

## **EXTRA REHEARSALS**

Throughout the year, occasional rehearsals will be held before or after school.

- Combined rehearsals: If we need to practice with the band and orchestra combined together, all participating students are expected to attend. Date will be announced at least two weeks in advance. *Rehearsals may be considered part of the student's grade.* Students who do not attend combined rehearsals may not participate in the concert performance.
- Sectionals: All music students will have sectionals after school. Your section will determine a day everyone can attend. Each student will be required to attend 1-2 sectionals per year.
- Supplemental rehearsals: If the director decides a supplemental rehearsal is needed, all students are expected to attend. Date will be announced at least two weeks in advance. Supplemental rehearsals are usually held before or after school.

## **FUNDRAISING**

Most field trips, and all extracurricular activities, are paid for by students' families or through fundraising activities. Music students will be involved in approximately two fundraisers per year. If you do not wish your child to be involved in fundraising, that's okay. However, as a secondary option to fundraising, please consider making a donation to the Sierramont music department.

## **MUSIC COUNCIL**

The Sierramont Music Council is a student-run organization that focuses on improving the music program throughout the year. Music council officers act as representatives of their peers, share ideas and suggestions with the director, and can create committees to help with projects. Each officer will also conduct the class occasionally. There are three officers in each class: historian, secretary, and librarian. Positions are now open, and voting will take place within the first month of the school year. There will be approximately 5-6 meetings per year, held once a month on Thursdays from 1:15-2:00 (additional meetings if necessary). Only officers may attend meetings. Meeting dates will be announced at least a week in advance.

**Historian:** takes pictures throughout the year, prepares slideshows for concerts and events, creates collages for the classroom.

**Secretary:** helps with office work, paperwork, and classroom organization, has computer responsibilities, takes daily attendance.

**Librarian:** is in charge of the music library, helps create sightreading folders, passes out new music throughout the year, makes copies occasionally.

## **PARENT INVOLVEMENT**

Family and community members are always needed in the music program, either as tutors, chaperones for field trips, or treasurers for our fundraisers, etc. Please contact your child's music teacher if you can help out in any way. The students and staff at Sierramont appreciate the time and energy spent by volunteers at our school.

## **PERFORMANCES AND EVENING COMMITMENTS (MANDATORY)**

Performing is an integral part of instruction for musical groups, and is the reason we rehearse every day at school. A required performance is the grading equivalent of a final exam in an academic core class. An unexcused absence from a required performance will result in a grade of "zero" for that performance. This can dramatically affect a student's overall grade. To be considered for an excused absence due to extreme family emergency or illness, the situation must be explained in a parent note to the director as soon as possible. All other non-emergency excuses must be submitted *at least two weeks before the performance*. At the director's discretion, the excused absence *might* be eligible for make-up by an equal and alternate assignment completed during the same semester as the missed performance. All major performance dates can be found in this handbook. In the event of any performance changes or additions, families will be notified as soon as possible.

## **PRACTICE REQUIREMENTS**

Practicing is essential to becoming a successful musician. Even professional musicians practice constantly, up to four or more hours per day! "You can never practice too much!" In music class, practice time is equivalent to homework time. Students with small instruments *must* practice at home. Students with large instruments are invited to practice in the music room after school, maximum of three days per week. Large instruments are: cello, bass, tenor sax, bari sax, bass clarinet, bassoon, horn, trombone, euphonium, tuba, and percussion. The director will initial those students' practice records every day. Students are responsible for notifying their parents on the days they would like to stay after school and practice in the classroom. SmartMusic practicing and test minutes count toward the student's weekly minutes.

Practice time requirements are:

- Turn in a monthly "practice record" signed by a parent. Practice records are due on the first of every month, or the Monday following the first of the month.
- Practice an average of 100 minutes a week, or 20 minutes each school day.
- Private lessons on your band/orchestra instrument count as practice time (If a student plays the trumpet in band and has a one-hour trumpet lesson, he/she will earn 60 minutes on their practice record)
- A student may earn extra credit for practicing more than the required amount. Double credit (200%) is the maximum for any month of practicing.
- A student may earn extra credit for taking private lessons on a second instrument (5 points for each month of lessons)

## **SMART MUSIC**

SmartMusic is undergoing a transition, so please do not purchase any accounts at this time. Eventually, a SmartMusic account will be required for *Advanced* band and orchestra students only. However, all students are encouraged to download SmartMusic at home! SmartMusic is computer software that can do many things, such as record playing tests, make .mp3 recordings, show fingerings for all notes, analyze mistakes, and provide an extensive library of music to practice. A computer microphone is also required. Any type of microphone is fine (such as a built-in microphone on a laptop or iPad) but SmartMusic microphones are available on the website for \$20-30. For families who cannot afford the registration cost or do not have a computer and microphone, a school account will be provided, and students can take their tests in the classroom.

Advanced classes will need to record some playing tests with SmartMusic. This can be done at home, in the classroom after school, or during second lunch when the director is in the classroom. Recording your playing test *does* count as practice time.

## T-SHIRTS

Later in the fall, students will be required to order a music t-shirt. The cost usually averages \$12.00. This t-shirt is part of the dress code for some performances and field trip. More information, including a design contest, will be coming soon!

## INSTRUMENT RENTAL

Sierramont does not have enough instruments for all students, which means many students *will need to rent* or use their own instrument. Below are some rent-to-own options from Music Village, a San Jose music store at 2971 Union Ave. in San Jose, 408-377-2504. They offer flexible rental terms, no minimum rental period, and no long-term obligations. All prices are monthly and include sales tax, and are applicable toward a new instrument of the same model or better. Insurance is available.

Some instruments are shown below. Availability also includes bassoons, horns, baritones/ euphoniums, bass clarinets, oboes, violas, cellos, and basses.

| Alto Saxophones   | Tenor Saxophones  | Trombones   | Trumpets  | Clarinets   | Flutes  | Violins   |
|---|---|---|---|---|---|---|
|  |  |  |  |  |  |  |
| <b>USED</b> \$45-\$67<br><b>NEW</b> \$73-\$77                                     | \$56-\$69<br>\$88-\$88  | \$23-\$36<br>\$41-\$41  | \$25-\$36<br>\$41-\$41  | \$17-\$31<br>\$34-\$37  | \$20-\$30<br>\$35-\$35  | \$15-\$31<br>\$25-\$36  |

## INSTRUMENTATION

Every music class must have a balanced sound in order to be successful. This means that some students may be asked to learn a new instrument. If there are not enough volunteers to switch instruments, auditions may be needed. For example, if there are too many flutes and not enough trombones and tubas, only the top-scoring students may remain on flute, and the rest would be asked to play trombone or tuba during class.

## INSURING INSTRUMENTS

Although reasonably secure instrument storage is made available to students during the day, Berryessa Union School District is not responsible for personal property brought to school. Students will be instructed in class regarding strategies for protecting instruments from loss or theft, and should bring their instruments to the music room every morning at 7:45. Each student will be assigned a spot to store their instrument, and is responsible for keeping that spot in good condition. Students are *not* encouraged to carry instruments around during the school day. Please insure instruments on a homeowner's policy. If the instrument is being rented through a local music store, please buy the coverage through the store.

| MUSIC STORES  | ONLINE RESOURCES   |
|---|--|
| <b>Music Village*</b> 408-377-2504<br>2971 Union Ave., San Jose<br><i>Full range instrument rentals, books, and accessories</i>   | The Woodwind and Brasswind* <a href="http://www.wwbw.com">www.wwbw.com</a><br><i>Full selection of everything related to brass, woodwinds, percussion, and strings</i> |
| <b>Allegro Music</b> 510-793-3500<br>3115 Walnut Ave., Fremont<br><i>Excellent brass and woodwind repairs, full range of accessories</i>  | Musician's Friend: <a href="http://www.musiciansfriend.com">www.musiciansfriend.com</a><br><i>Reasonable selection of instruments and accessories at great prices</i>  |
| <b>Encore Music</b> 408-262-4881<br>16 Corning Ave. #116, Milpitas  | Smart Music: <a href="http://www.smartmusic.com">www.smartmusic.com</a><br><i>All advanced students must have an account</i>   |
| <b>Kamimoto Strings*</b> 408-298-8168<br>609 North 4 <sup>th</sup> Street, San Jose<br><i>Excellent string repairs, full range of <b>string</b> instruments, books, and accessories</i> | J.W. Pepper: <a href="http://www.jwpepper.com">www.jwpepper.com</a><br><i>Music books, sheet music, and audio recordings of popular band/orchestra music</i>           |

\*Recommended

## **ATTENDANCE**

Attendance is a very important part of creating a successful musical ensemble. Without everyone at rehearsal, the group as a whole cannot improve. This includes daily class time, *as well as occasional before and after school rehearsals*. Students will be marked tardy if:

- They are not in the classroom by the time the bell rings AND/OR
- They are not in their seats with music, a pencil, and instrument set up by the designated time (Advanced = 3 minutes after bell, Cadet/Intermediate = 4 minutes after bell).

If a student needs to leave the room for any reason, he/she must first ask for permission, then sign out, and sign back in upon return to class.

ATTENDANCE AT EVERY CONCERT IS **REQUIRED**. Concert dates are announced now, so they take priority on your calendar. To earn full credit, every student must stay to the end of the concert.

## **RULES**

1. Be Respectful. Respect yourself, other students, teacher, classroom, and instruments. Do not touch instruments that aren't yours. Don't complain about the daily schedule.
2. Be Responsible. Be responsible for yourself only. Practice at home as needed. Always be on time and come to class prepared.
3. Give 100% Effort. Always try your best during rehearsal, so we can all improve together.

## **CONSEQUENCES**

1. Verbal warning.
2. Loss of daily participation points. Possible written warning. Number of points lost is based on the severity of the situation (maximum of three per day). Possible after-school detention.
3. Referral or removal from class. After three written warnings, or after a severe incident, student gets a referral to the office. Possible removal from music class for the rest of the school year.

There is absolutely no food, drink, or gum allowed in the music room. Only bottled water is allowed.

Food / drink / gum discipline procedures are as follows:

First three infractions: verbal warning.

Fourth infraction: "Written Statement" assignment

Fifth infraction: music room detention after school, and parent phone call or note sent home.

## **REWARDS**

1. High Festival Ratings. An ensemble that works well together will earn high ratings at competitions.
2. Field Trips and Concerts. Well-behaved students will earn field trips throughout the year, and will have successful concert performances.
3. Positive Reputation. Make the Sierramont Music Department known throughout the community as a top performing group!
4. Have Fun! It's fun to be in an ensemble that sounds great!

## **GRADING**

Grades in music class are strongly based on participation. Students receive all three daily participation points if they are on their best behavior, and come prepared with a pencil, instrument, and book/music. However, concert attendance, behavior, and participation is the **LARGEST** portion of a student's grade. Grading rubric is as follows:

- Concerts (attendance, behavior, participation, and wearing black dress clothes) – 40%
- Participation (being prepared, well-behaved, and eager to learn) – 25% (calculated monthly)
- Tests (scale tests, performance tests, and written theory tests) – 20%
- Classwork/Homework (in-class performances, theory, 100 minutes of practice per week) – 15%

## **EXTRA CREDIT**

Attending any upper-level (high school or higher) classical music event will earn your student five extra credit points! I will let you know of upcoming community music concerts. They are usually inexpensive and fun for the entire family. Private lessons on a second instrument are also worth five points per month.



## CLASS MATERIALS

The next two pages describe all the materials required for music class. To make sure you purchase the correct items, bring these pages with you to the music store!

### BOOKS

The band classes use the book titled “Standard of Excellence” Comprehensive Band Method (no CD needed). It is important that each student have their own, because we will be taking notes and practicing writing music in the books.

**Remember:** Cadet Band students are required to buy Book 1 (red). Intermediate Band students are required to buy Book 2 (blue). Advanced Band students are required to buy Book 3 (green). Percussionists must buy both the “Drums and Mallet Percussion” *and* “Timpani and Auxiliary Percussion” books. Make sure you buy the book *for your student’s specific instrument*. Please e-mail me if you have any questions about which book to buy.

The price of the book is usually \$6.95 and can be found at the following locations:

- Online at [www.jwpepper.com](http://www.jwpepper.com). Type “Standard of Excellence” into the search bar.
- Music Village at 2971 Union Ave. in San Jose. (408) 377-2504 (*Recommended*)
- Encore Music store at 16 Corning Ave. in Milpitas. (408) 262-4881

Before you go to a music store, call ahead to ensure they have your correct level and instrument. If not, please consider ordering online.

### MUSIC FOLDER

Every student must have a matching Sierramont deluxe black music folder. They are durable and last for years! Each student may borrow one for the year. However, if you would like to buy a custom folder with your student’s name engraved on the front, please send a check for \$20.00 to Sierramont Middle School, along with the “Music Folder Order Form.”

### INSTRUMENTS

Each student is responsible for acquiring and maintaining his/her instrument. There are three ways to acquire an instrument:

- Use a personal instrument
- Rent an instrument from a local music store
- Borrow an instrument from Sierramont

If your student does not have their own instrument, I recommend renting from a local music store. Their instruments are usually in very good condition, and they provide free or discounted repairs. It is a good investment. For example, at Music Village as mentioned earlier, all rental payments go toward the purchase of a new instrument.

Sierramont does have a limited number of instruments available to families who are unable to afford rental payments. These will be distributed for free, according to the family’s needs. A signed loan contract is required, and families will be responsible for any loss or damage of instruments.

**PERCUSSION:** In addition to the Standard of Excellence book, all intermediate/advanced percussion students must buy their own pair of concert snare drum sticks. Please purchase the Vic Firth American Classic Hickory drumsticks, wood, size 5A, available for \$6.99 online at [www.wbw.com](http://www.wbw.com) (search for item number 460490. Be sure to select “Wood 5A.”)

Percussion students have 2 options: buy a snare drum practice pad, or borrow a tom-tom drum from Sierramont to practice with at home. For parents who would like quieter practice time, the pad is the best idea! It is also a great investment for students who would like to continue playing in the future. They are available for about \$16 at your local music store, or online at [www.wbw.com](http://www.wbw.com) (search for item number 33787). I recommend the 8” Remo Practice Pad.

(more class materials continued on next page)

## INSTRUMENT ACCESSORIES

| Instrument                              | Required   | Recommended   | Unacceptable                                 | Optional   |
|---|--|---|--|--|
| Flute                                   | Cleaning rod   | cleaning swab,<br>polishing cloth,<br>key brush                                   |  | left-finger pad,<br>tarnish paper  |
| Bassoon/<br>Oboe                        | Medium reeds.<br>Cleaning swabs.<br>Small water canister | Reed Guard  | Soft reeds                                   |  |
| Clarinet                                | Any brand reeds<br>(size 2 or 2½)                        | Vandoren size 2½ reeds,<br>cleaning swab,<br>mouthpiece cap,<br>cork grease       | size 1 or 1½ reeds                           | Thumb rest,<br>reed case/guard,<br>mouthpiece brush                            |
| Saxophone                               | Any brand reeds<br>(size 2 or 2½)                        | Rico Royal size 2½ reeds,<br>cleaning swab,<br>mouthpiece cap<br>cork/neck grease | size 1 or 1½ reeds                           | reed case/guard,<br>mouthpiece brush   |
| Trumpet,<br>Horn,<br>Euphonium,<br>Tuba | valve oil (Al Cass)                                      | polishing cloth,<br>mouthpiece brush,<br>tuning slide grease                      | trombone slide<br>cream,<br>any brass polish | polishing cloth,<br>mouthpiece brush,<br>“snake” (tubing brush)                |
| Trombone                                | trombone slide<br>cream                                  | travel size spraying water<br>bottle  | valve oil                                    | Mouthpiece brush,<br>cheese cloth and long<br>cleaning rod,<br>polishing cloth |
| Percussion                              | Snare sticks.<br>Practice pad<br>or tom-tom              | Vic Firth Nova Hickory<br>sticks (size 5A)<br>Remo 8” practice pad                |  | Other practice<br>instruments (drum set,<br>xylophone, etc.)                   |

**ALL BOOK, INSTRUMENT, AND ACCESSORY PURCHASES MUST BE COMPLETE BY TUESDAY, AUGUST 22. STUDENTS WILL NOT PLAY THEIR INSTRUMENTS UNTIL ALL EQUIPMENT IS PURCHASED/BORROWED, AND ALL PAPERWORK IS COMPLETE.**

### OTHER MATERIALS

The following items must be purchased (or borrowed) through the Sierramont music department:

- Music polo shirt and t-shirt
- Music folder
- \$120 Berryessa Music Boosters donation

### ADVANCED MATERIALS

Students enrolled in Advanced band and orchestra must also purchase (or borrow from Sierramont) the following:

- Electronic tuner and metronome (recommended: Korg TM-50)
- SmartMusic subscription and microphone

### UNIFORMS

All music students wear the same concert performance attire. It includes black dress pants and nice black shoes. Boys must wear black socks. Girls may wear either black socks or no socks. All students are required to wear a Sierramont Music shirt. The price of the shirt is \$18.00. Families facing financial difficulties may borrow a shirt from Sierramont. Students may not wear music shirts during the school day, outside of school, or at any time other than at concerts/assemblies. However, friends and family are encouraged to buy a shirt and wear it anytime to show their support for Sierramont Music!

## **IMPORTANT DATES**

*Please write these dates in your calendar. The dates are announced far in advance, so that they will take priority if a scheduling conflict occurs. Remember, all performances are **mandatory**.*

### **DUE TUESDAY, AUGUST 22**

- Last two pages of this handbook, including...
- Music shirt order form (for everybody who does not already have a shirt) and a \$18.00 check  
Shirt form: <https://goo.gl/forms/E9bJLEC6IOSM00SF2>
- Music folder order form (for anybody who would like a personalized folder) and a \$20.00 check  
Folder form: <https://goo.gl/forms/2fcpWhuijauhCPaF2>
- If you are **borrowing** an instrument from Sierramont, you must bring your rental contract

All music supplies must be brought to school, including:

- Your instrument and a pencil
- Music book
- Required accessories (strings, reeds, valve oil, etc.). **Percussionists**, bring your sticks. If you are not borrowing a drum from school, bring your practice pad to school to show you've bought one.

***Remember: No student will play their instrument in class until handbook agreement is turned in.***

### **DUE FRIDAY, SEPTEMBER 1**

- Berryessa Music Booster forms and one of the following options:
  1. Full payment of \$120 in a check made to Berryessa Music Boosters, Inc.
  2. First payment of \$40
  3. A smaller payment that fits your family's budget, **with note or email from parent**

## **2017-2018 MUSIC DEPT. SCHEDULE**

also found at: <http://sierramont.berryessa.k12.ca.us/> > Activities > Band and Orchestra

| <b>DATE</b>              | <b>TIME</b>    | <b>EVENT</b>   |
|--------------------------|----------------|--|
| Tues, Sept. 19           |                | Fall Fundraiser (GoFundMe)   |
| Fri, Oct. 6              | 2:45-8:00 p.m. | BUSD Fall <i>Advanced Choir</i> Retreat at Sierramont MS               |
| Wed, Dec. 6              | 6:00 p.m.      | Band and Orchestra Winter Concert                                      |
| Thurs, Dec. 7            | 7:00 p.m.      | Choir Winter Concert   |
| 🎵 Fri, Dec. 8            | school day     | Winter Concert Assemblies  |
| 🎵 December, TBA          | School day     | Music Group photos in the gym (every period)                           |
| Fri, Jan. 26             | 7:00 p.m.      | Advanced Band and Orchestra Concert at PHHS                            |
| Fri, Jan. TBA            | 7:00 p.m.      | Advanced Choir Concert at PHHS   |
| Thursday, March 1        | 5:30 p.m.      | Disneyland Parent Meeting (5:00 chaperone meeting)                     |
| Wed, March 7             | 6:00 p.m.      | Band & Orchestra Spring Concert  |
| Thurs, March 15          | 7:00 p.m.      | Choir Spring Festival Concert  |
| 🎵 Fri - Sun, March 23-25 |                | Disneyland! Adv. Band, Adv. Choir, Adv. Orchestra only.                |
| Tues, March 27           | 7:00 p.m.      | Berryessa Band Festival at the BYC (Advanced Band only)                |
| Wed, March 28            | 7:00 p.m.      | Berryessa Orch Festival at the BYC (Advanced Orch only)                |
| 🎵 March/April TBA        |                | CMEA Festival for Advanced students                                    |
| Thurs, May 3             | 5:30-7:00 p.m. | Music Department End-of-the-Year Celebration                           |
| Fri, May 11              | 2:45-8:00 p.m. | BUSD Spring <i>Advanced Choir</i> Retreat at Sierramont                |
| 🎵 May, TBA               | 1:00-6:00 p.m. | Cadet Band students perform at nursing homes                           |
| Wed, May 17              | 7:00 p.m.      | Choir Pops Concert   |
| 🎵 Fri, May 18            | school day     | End of the Year Concert Assemblies                                     |
| Sat, May 19              | all day        | Music in the Parks at Great America (Intermediate Band/Orch/Choir)     |
| Tues, May 22             | 6:30 p.m.      | Band and Orchestra End of the Year Concert                             |
| Thurs, June 7            | TBA            | 8 <sup>th</sup> gr. Promotion Ceremony (select music students perform) |

***Please ensure you have read the handbook thoroughly. Parent signature form required by Tuesday, August 22.***

## COMPLETE FINANCIAL CHECKLIST

*Due Tuesday, August 22*

### MAKE A COPY FOR YOUR RECORDS

| Cost    | Due                       | Who?                                | Item   | CHOOSE ONE OPTION  |  |
|---------|---------------------------|-------------------------------------|--|--|--|
| \$18    | Tues.<br>Aug. 22          | All <u>new</u><br>music<br>students | Music Shirt  | <input type="checkbox"/> Online form: will buy shirt<br><input type="checkbox"/> Paper form: will buy shirt<br><input type="checkbox"/> Already own shirt  | <input type="checkbox"/> Need to borrow a shirt<br>because... _____<br>_____                                     |
| \$20    | Tues.<br>Aug. 22          | All<br>Students                     | Music Folder   | <input type="checkbox"/> Online form: will buy folder<br><input type="checkbox"/> Paper form: will buy folder<br><input type="checkbox"/> Already own  | <input type="checkbox"/> Prefer to borrow a folder   |
| varies  | Tues.<br>Aug. 22          | All<br>Students                     | Instrument<br>and all<br>instrument<br>accessories                         | <input type="checkbox"/> Will bring my own<br>instrument<br><input type="checkbox"/> Will rent from a local music<br>store   | <input type="checkbox"/> Need to borrow an instrument<br>because... _____<br>_____<br><br>Instrument: _____      |
| \$6.95  | Tues.<br>Aug. 22          | All<br>Students                     | Music book<br><br>(see "Class<br>Materials"<br>section for<br>book titles) | <input type="checkbox"/> Will order online (such as<br><a href="http://www.jwpepper.com">www.jwpepper.com</a> )<br><input type="checkbox"/> Will buy at a local music<br>store<br><input type="checkbox"/> Already own | <input type="checkbox"/> Need to borrow a book<br>because... _____<br>_____<br>_____                             |
| \$120   | Fri.<br>Sept. 1           | All<br>Students                     | Berryessa<br>Music<br>Boosters<br>Donation                                 | <input type="checkbox"/> Will pay \$120 by Sept 1<br><input type="checkbox"/> Will pay \$40 each in Sept,<br>Oct, and Nov.   | <input type="checkbox"/> Will pay smaller amount<br>because (note to Ms. White here):<br>_____<br>_____<br>_____ |
| varies  | Dec. 1                    | All<br>Students                     | ALL BLACK<br>pants, shoes,<br>socks for boys                               | <input type="checkbox"/> Will provide my own<br>(required)   | (No rental options available)  |
| \$20.00 | Tues.<br>Aug. 22          | Advanced<br>classes<br>only         | Electronic<br>Tuner <i>and</i><br>metronome                                | <input type="checkbox"/> Will order online<br>(suggested: search "Korg<br>TM-50")<br><input type="checkbox"/> Will buy at a local store<br><input type="checkbox"/> Already own  | <input type="checkbox"/> Need to borrow a tuner<br>because... _____<br>_____<br>_____                            |
| TBA     | Do not<br>order<br>yet... | Advanced<br>classes<br>only         | SmartMusic<br>subscription<br>and computer<br>/iPad / laptop<br>microphone | <input type="checkbox"/> Will do my assignments at<br>home   | <input type="checkbox"/> Need to use classroom computer<br>to do my assignments because ...<br>_____<br>_____    |

**SIERRAMONT BAND AND ORCHESTRA**  
**PARENT HANDBOOK AGREEMENT**  
*Due Tuesday, August 22*

Student's Full Name: \_\_\_\_\_

Class (circle one): Cadet Band / Int. Band / Adv. Band / Int. Orch. / Adv. Orch

Parent #1 Name: \_\_\_\_\_

Parent Phone: (daytime) \_\_\_\_\_ (evening) \_\_\_\_\_

Parent Email Address (print clearly): \_\_\_\_\_

I am interested in being a volunteer! Please put me on the list for:

- Helping with selling food at concerts
- Instrument repair pick-up / drop-off in Fremont
- Instrument repair pick-up / drop-off in downtown San Jose
- Chaperoning (to festivals and local events)
- Chaperoning (to Disneyland, advanced classes only)
- Other: \_\_\_\_\_

Parent #2 (optional)

Name: \_\_\_\_\_

Parent Phone: (daytime) \_\_\_\_\_ (evening) \_\_\_\_\_

Parent Email Address: \_\_\_\_\_

I am interested in being a volunteer! Please put me on the list for:

- Helping with selling food at concerts
- Instrument repair pick-up / drop-off in Fremont
- Instrument repair pick-up / drop-off in downtown San Jose
- Chaperoning (to festivals and local events)
- Chaperoning (to Disneyland, advanced classes only)
- Other: \_\_\_\_\_

I give permission to use my child's picture on...

- The Sierramont Website
- YouTube
- Instagram

**REQUIRED:**

- I indicate that I have read the Band/Orchestra Handbook online at:  
<http://sierramont.berryessa.k12.ca.us/subsites/Lauren-White/>**
- I understand all the class requirements and outside-of-school responsibilities. I understand my student will be graded on some outside-of-school activities.**
- I agree to sign my student's practice record every month. I will make sure he/she practices 100 minutes per week.**

Comments: \_\_\_\_\_

Student Signature: \_\_\_\_\_ Date: \_\_\_\_\_

Parent Signature: \_\_\_\_\_ Date: \_\_\_\_\_

**Order Form - Sierramont Concert Shirt**

Also available at: <https://goo.gl/forms/E9bJLEC6IOSM00SF2>

**Due Tuesday, August 22**

The dress for Sierramont band/orchestra concerts includes a uniform black collared shirt. It is a nice cotton/polyester blend polo shirt, with a Sierramont Music logo on the left pocket area. All band/orchestra students are required to own the shirt. Parents, friends, and family members are also encouraged to buy a shirt... Show your support for Sierramont Music!

**Shirts are \$18 each**

Student Name: \_\_\_\_\_

Class (circle one): Cadet Band / Int. Band / Adv. Band / Int. Orch. / Adv. Orch

| Qty.  | Size                  | Qty.  | Size         | Qty.  | Size                 |
|-------|-----------------------|-------|--------------|-------|----------------------|
| _____ | Youth Medium (10-12)  | _____ | Adult Small  | _____ | Adult XL             |
| _____ | Youth Large (14-16)   | _____ | Adult Medium | _____ | Adult XXL (\$20.00)  |
| _____ | Youth X-Large (16-18) | _____ | Adult Large  | _____ | Adult XXXL (\$20.00) |

TOTAL # SHIRTS: \_\_\_\_\_ TOTAL \$ ATTACHED (checks only): \_\_\_\_\_

**PLEASE DO NOT SEND CASH.**

Make checks payable to Sierramont Middle School. Write student name on front of check.

We cannot afford to pay for the shirt, and would like to borrow one from the school for the year.

Parent/Guardian Name: \_\_\_\_\_ Phone: \_\_\_\_\_

----- Please cut along dotted line ✂ -----

**Order Form – Personalized Music Folder (optional)**

Also available at: <https://goo.gl/forms/2fcpWhuijauhCPaF2>

**Due on Tuesday, August 22**

Ordering a music folder is optional. These folders are large black leatherette with brass reinforcements on the corners. The front will be engraved with “Sierramont Middle School Music Department” and the student’s name, if you choose. These folders are great, and can last for many years!

**Folders are \$20 each**

Student Name: \_\_\_\_\_

Class (circle one): Cadet Band / Int. Band / Adv. Band / Int. Orch. / Adv. Orch

Exact name to be engraved on the folder: \_\_\_\_\_  
\_\_\_\_\_

TOTAL # FOLDERS: \_\_\_\_\_ TOTAL \$ ATTACHED (checks only): \_\_\_\_\_

**PLEASE DO NOT SEND CASH.**

Make checks payable to Sierramont Middle School. Write student name on front of check.

The shirt payment and the folder payment may be combined for a total of \$38.00